

CITY HOME COLLECTION

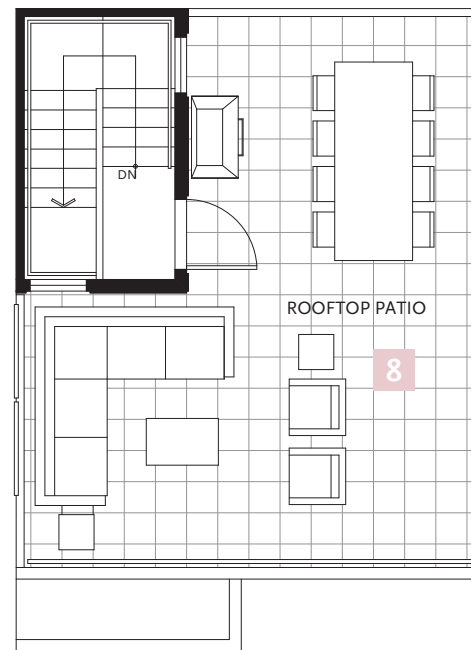
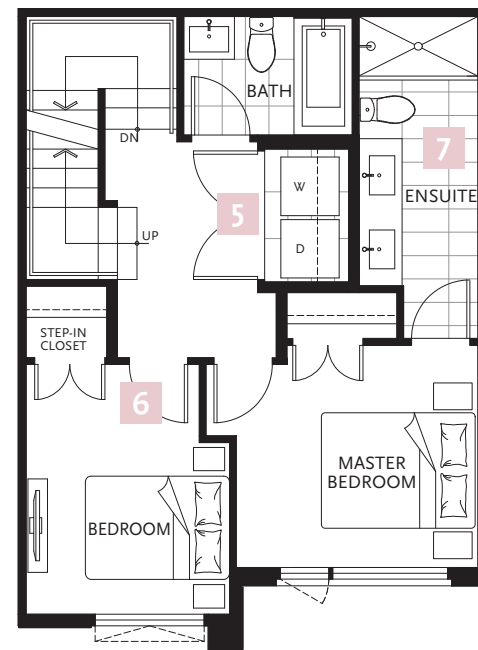
INTERIOR: 2 BED & 2.5 BATH | 1,069 SF

EXTERIOR: BALCONY & ROOFTOP PATIO | 389 SF



HOME HIGHLIGHTS

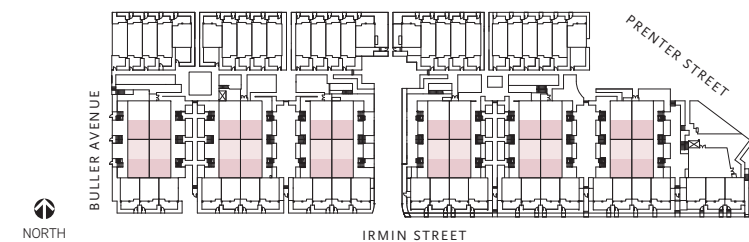
- 1 Home location allows for direct access to the beautifully landscaped courtyard
- 2 Convenient powder room on main level
- 3 Kitchen nook is the perfect workstation or space for added storage
- 4 Large, L-shaped integrated kitchen with an island and plenty of storage, including a pantry
- 5 Side-by-side washer and dryer with a countertop, rod and shelving
- 6 Second bedroom features an extra-deep step-in-closet
- 7 Large master ensuite with a double vanity and a frameless glass shower
- 8 Features a spacious rooftop patio with gas and water bibs



MAIN LEVEL

SECOND LEVEL

ROOFTOP PATIO



Dimensions, layouts, material and feature specifications and other details are subject to change without notice and may vary from the completed development. E.&O.E.